

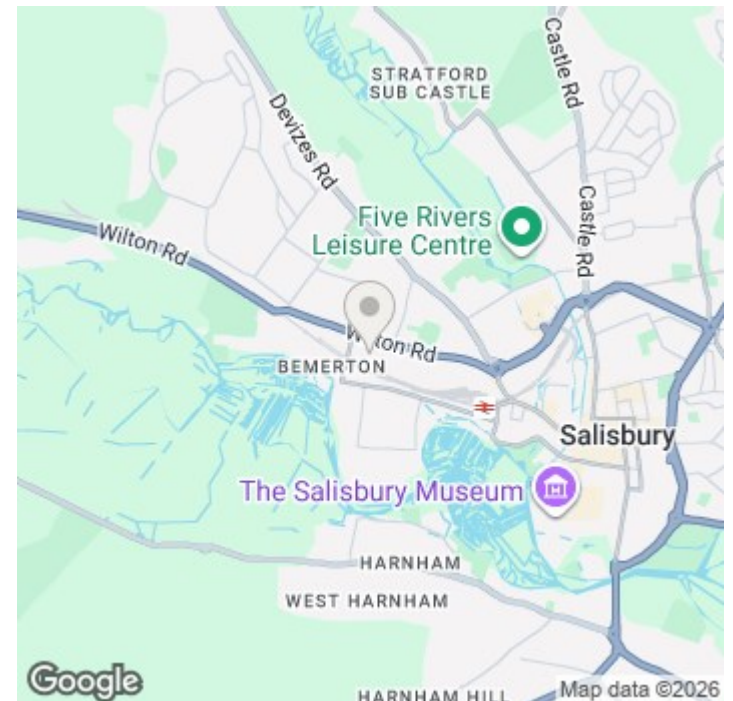


17 Nursery Road, Salisbury, Wiltshire, SP2 7HX

£1,200 PCM

About The Property

- Recently re-decorated throughout.
- Sitting room with feature fireplace.
- Dining room with storage cupboard.
- Kitchen with gas cooker and space for appliances.
- Large bathroom with shower over bath and storage cupboard.
- Two double bedrooms with fitted wardrobes.
- Attractive enclosed garden with shed.
- Gas Central Heating
- Double glazing.
- EPC Band D



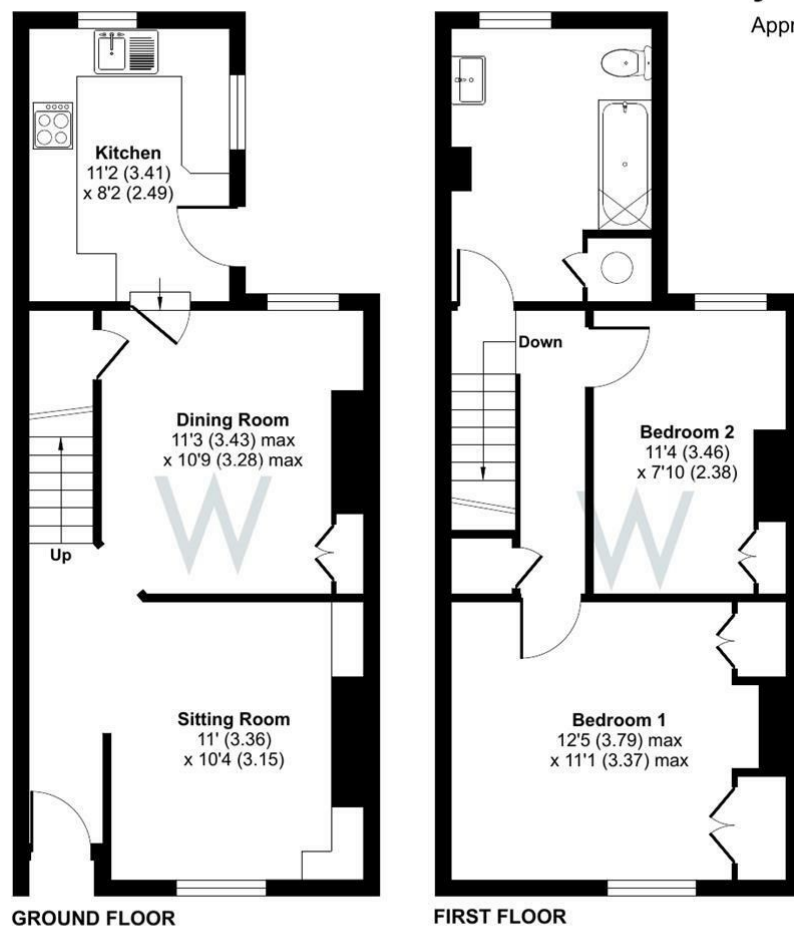




Nursery Road, Salisbury, SP2

Approximate Area = 821 sq ft / 76.3 sq m

For identification only - Not to scale



Floor plan produced in accordance with RICS Property Measurement 2nd Edition, Incorporating International Property Measurement Standards (IPMS2 Residential). © nichecom 2025. Produced for H.W White Ltd. REF: 1298111



Further Information

Let available date: 16th February 2026 NB: This date is provisional and will only be confirmed once referencing has been successfully completed.

Property type: House - Terraced

Furnish type: Unfurnished

Deposit: £1,380

Local authority: Wiltshire Council

Council Tax: Band C

EPC: D(61)

Energy Efficiency Rating

	Current	Potential
Very energy efficient - lower running costs		
(92 plus) A		
(81-91) B		85
(69-80) C		
(55-68) D	61	
(39-54) E		
(21-38) F		
(1-20) G		
Not energy efficient - higher running costs		
England & Wales	EU Directive 2002/91/EC	